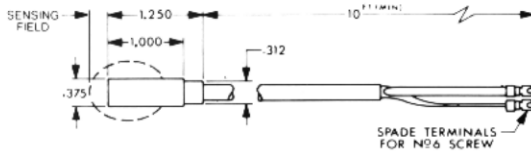


SPECIAL PURPOSE/MISC. INDUCTIVE SENSE HEADS

Model 4944

Molded, Clamp Mount
Weight: 5.5 oz. (156 gr.)



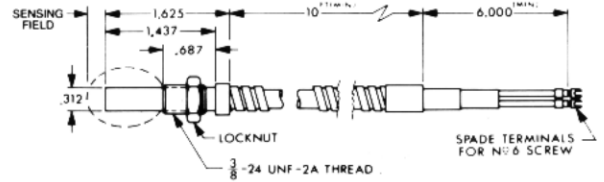
Stable Operating Gap*
Presence: .250" (6.35 mm)
Gauging: .100" (2.54 mm)

For 25' cable version order Model 4944A25 Wt: 11 oz. (312 gr.)



Model 4949

304 SSTL Armored Cable
Weight: 14.5 oz. (412 gr.)

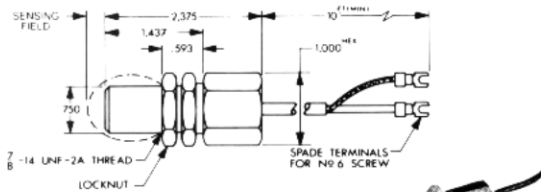


Stable Operating Gap*
Presence: .250" (6.35 mm)
Gauging: .100" (2.54 mm)



Model 85001

Weight: 9.0 oz. (255 gr.)



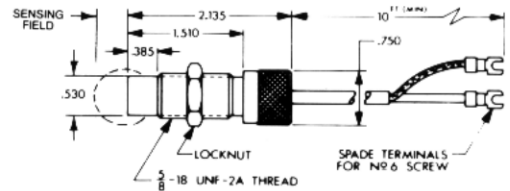
Stable Operating Gap*
Presence: .250" (6.35 mm)
Gauging: .100" (2.54 mm)

For 25' cable version order Model 85001A25 Wt: 15 oz. (426 gr.)



Model 85005

Weight: 6.5 oz. (185 gr.)



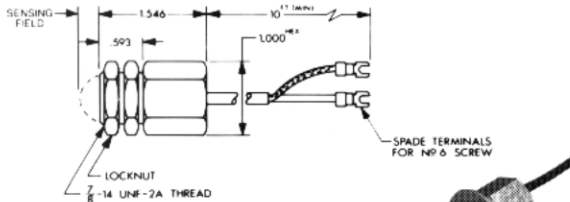
Stable Operating Gap*
Presence: .300" (7.62 mm)
Gauging: .130 (3.3 mm)

For 25' cable version order Model 85005A25 Wt: 12 oz. (340 gr.)
For gauging use convertor EMDXX43/53CNV.



Model 85004

Weight: 9.0 oz. (255 gr.)



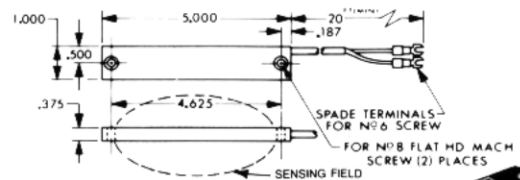
Stable Operating Gap*
Presence: .250" (6.35 mm)
Gauging: .100" (2.54 mm)

For 25' cable version order Model 85004A25 Wt: 15 oz. (426 gr.)



Model 4948 Rectangular

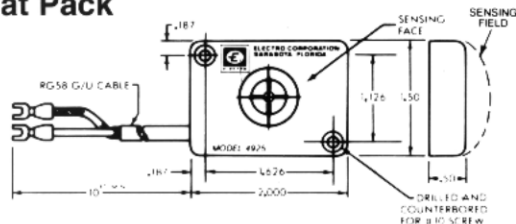
Dual Side Sensing
Weight: 10.5 oz. (298 gr.)



Stable Operating Gap*
Presence: .500" (12.7 mm)
Gauging: N/A



Model 4925 Flat Pack

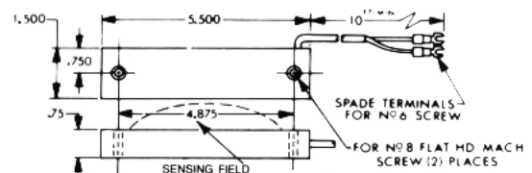


Stable Operating Gap*
Presence: .350" (8.89mm)
Gauging: .160 (4.0 mm)



Model 4988A25 Rectangular

Single Side Sensing
Weight: 1 lb. 2 oz. (510 gr.)



Stable Operating Gap*
Presence: .500" (12.7mm)
Gauging: N/A

*Presence: when used for presence sensing with EN or PL Series Modules. Sense head ordered separately. Gauging: when used for linear measurement with EMD or PA115 Modules. Sense head included with system model #.