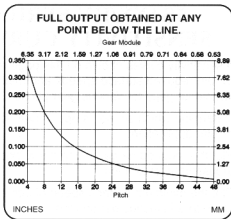


5/8 NZH SERIES NEAR-ZERO HALL-EFFECT SPEED SENSORS



FOR APPLICATIONS REQUIRING VERY LOW SPEED RESPONSE AND/OR SENSING OF FINE PITCH GEARS AT LARGE AIR GAPS. ALL SENSORS HAVE SEALED SENSING AREA. ALIGNMENT NOT REQUIRED. 300 SERIES SSTL HASHING.

SUPPLY VOLTAGE: 8.0 to 30VDC @ 35mA max.

Reverse Polarity Protected

REQUIRED TARGET: Gear, Sprocket, Hole Pattern

POWER ON STAB. TIME: 35 Sec.

OPER. TEMP. RANGE: -40 to 185 F (-40 to 85 C)

OPER. FREQ. RANGE: 0.05 Hz to 10 KHz

RISE/FALL TIME: 2 μ Sec. (820 ohms, 20 pf)

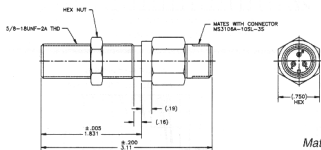
DUTY CYCLE: 20 to 80%

DIELECTRIC STRENGTH: 500 VAC

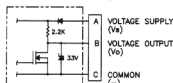
INSTALLATION TORQUE: 20 Ft/Lb (27 n/m)

WEIGHT: 4.0 oz. (114 gr.)

NZH400 - MS3106A CONNECTOR



SINKING

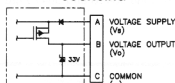


NZH400N

Low = 1.1 V max. @ 80 mA Sink

$$\text{High} = \frac{R_L \times V_s}{R_L + 2.2K}$$

SOURCING



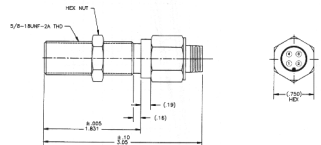
NZH400P

Low = Application Dependent

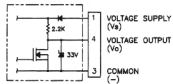
High = Supply - 2.3V

Mates with 41009(VR) Connector or CA310 Cable Assembly (black lead is output)

NZH430 - M12 x 1 QUICK DISCONNECT



SINKING

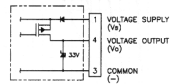


NZH430N

Low = 1.1 V max. @ 80 mA Sink

$$\text{High} = \frac{R_L \times V_s}{R_L + 2.2K}$$

SOURCING



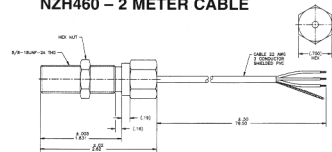
NZH430P

Low = Application Dependent

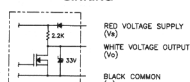
High = Supply - 2.3V

Mates with Micro Style 12mm DC Cable Assembly

NZH460 - 2 METER CABLE



SINKING

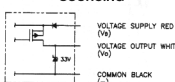


NZH460N

Low = 1.1 V max. @ 80 mA Sink

$$\text{High} = \frac{R_L \times V_s}{R_L + 2.2K}$$

SOURCING



NZH460P

Low = Application Dependent

High = Supply - 2.3V

R_L = Load Resistance in K ohms

V_s = Supply Voltage in VDC

