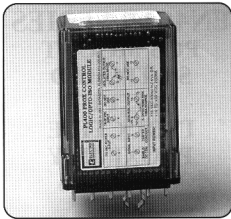
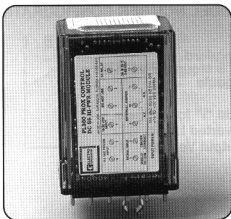


PL360B/PL400B* MULTI- FUNCTION INDUCTIVE PROXIMITY MODULES

For General Specifications
See Page 66 & 67



PL360B - 3 Amp DC Solid-State Relay

PRODUCT DESCRIPTION:

Proximity amplifier and DC SSR for medium speed applications driving relays or solenoids.

SPECIFICATIONS: (@ 25C)

Output, Continuous: 3AMPS, 3-60VDC @ 25°C, derate linearly to 1.7AMPS @ 70°C

Surge: 5AMPS for 1 second

On State Voltage Drop: 1.2 VDC max.

Operating Speed: 870 Hz max.

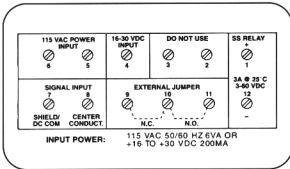
Jumper selectable NO/NC operation

POWER REQUIREMENTS:

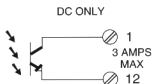
MODEL PL360B: 97 to 132VAC 50/60 Hz @ 6VA
or 16-30VDC @ 200 mA max.

MODEL PL360B-230: 196 to 264VAC 50/60 Hz @ 6VA
or 16-30VDC @ 200 mA max.

WEIGHT: 12 oz. (340 gr.)



OUTPUT CONFIGURATION



PL400B Logic & Optically Isolated Output

PRODUCT DESCRIPTION:

Proximity amplifier and logic output for high speed digital output switching requirements.

SPECIFICATIONS: (@ 25C)

Logic (Non-Isolated) Output: Sink - 50mA max. @ 12VDC. Source 12mA max. @ 12VDC into zero ohms, 1K source impedance

Optically Isolated Output: 10mA max., 60VDC max.

Operating Speed: 15KHz max.

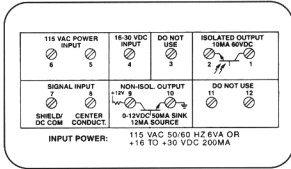
Note: Output logic invertible via internal jumper.

POWER REQUIREMENTS:

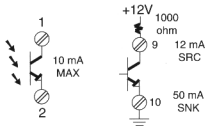
MODEL PL400B: 97 to 132VAC 50/60 Hz @ 6VA
or 16-30VDC @ 200 mA max.

MODEL PL400B-230: 196 to 264VAC 50/60 Hz @ 6VA
or 16-30VDC @ 200 mA max.

WEIGHT: 12 oz. (340 gr.)



OUTPUT CONFIGURATION



ISO
9001

*Note: Sensing range is determined by sense head used, choose from 49XX or 85XXX Series.
Requires Model 58390 socket for panel mounting.
Case Dimensions: H = 3.75" W = 2.62" D = 1.68"

