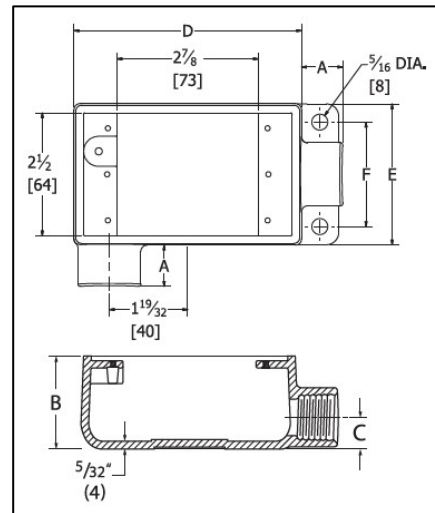


Model ZS12 is housed in a cast aluminum enclosure with gasketed cover.



Dimensions (in inches) and Threads

General Specifications

Operating Voltages: 9-36 VDC or 100-240 VAC

Current Draw: 50 mA

Circuit Protection:

Internal ½ amp fuse, non-replaceable

Input Signal

12VDC, 3 wire, sourcing (PNP) or sinking (NPN)

Relay

Output:

SPDT Form 'C' dry relay contact (N.O/N.C.)

Contact Rating:

5 A at 120 VAC; 5 A at 30 VDC

Maximum switching frequency:

1,800 operations/hr (under rated load)

Life expectancy:

Mechanical 10,000,000 operations min. (at 1,800 operations/hr)

Electrical 100,000 operations min. (at 1,800 operations/hr)

Relay Set-Point Adjustment Range:

Standard: 1-100 RPM, 1 Pulse Per Revolution
Custom parameters are available.

Housing Material: Cast Aluminum

Sensing Distance to Target (Gap):

1/16" to 5/16" using Ferrous Target (Gartooth Wheel, Bolt Head, Key Stock, etc.)

1/2" to 5/8" using Phares Magnetic Disk

1" using Phares Magnet, Part No. SM-100

Minimum Gartooth Target Sizes:

1/8" gartooth length, width, depth and gap.

Gartooth Target Material:

High ferrous (iron) content.

Part Number Chart

ZS12- Y Z

Y – Input Voltage	Z – Target Material
A: 120 VAC	M: Magnetic
D: 6-24 VDC	F: Ferrous (such as gartooth, bolt head, or keystack)