

# DATA LOGGERS

## SIMPLE LOGGER® DATA LOGGERS

### MODELS SL01 TO SL13

These small AC and DC simple loggers can be ready to go in minutes with just a few parameters to set up



Model SL01

Model SL10

Model SL11

Model SL12

Model SL13

### SPECIFICATIONS

MODELS	SL01	SL10	SL11	SL12	SL13
<b>VOLTAGE</b>					
<b>Range</b>	0 to 5 Vac	±100 mVdc	±1 Vdc	±10 Vdc	±50 Vdc
<b>Resolution</b>	10 mV	0,1 mV	1 mV	10 mV	50 mV
<b>Accuracy</b>	±(0,5% of reading + 50 mV)*	±(0,5% of reading + 0,5 mV)*	±(0,5% of reading + 5 mV)*	±(0,5% of reading + 50 mV)*	±(0,5% of reading + 250 mV)*
<b>Maximum Input Voltage</b>	60 Vdc				
<b>Input Impedance</b>	800 KΩ				
<b>Power Source</b>	Internal: Two 1,5 V AA non-rechargeable batteries External: USB 2.0 (computer or other USB power source)				
<b>Power Consumption</b>	Internal power: 1 mA (average) External power: 100 mW				



### FEATURES

- Simple 1 button operation
- Quick 2 wire input connection
- User configurable scaling, units of measure and recording length
- Stores up to 4 million measurements
- Data analysis software included
- Software provides real-time trend graph display, data download, analysis and report generation
- Micro-B USB cable included

The Simple Logger Control Panel allows you to configure how data measured by these instruments is recorded and displayed. The available settings depend on which model is connected to the computer. The following table shows which configuration options are available for each model.

FEATURE	SL01	SL10	SL11	SL12	SL13	SL20	SL30	SL31	SL40	SL50
Set up recording	✓	✓	✓	✓	✓	✓	✓	✓	✓	✓
Define units	✓	✓	✓	✓	✓	✓	✓	✓	✓	✓
Set instrument clock	✓	✓	✓	✓	✓	✓	✓	✓	✓	✓
Erase instrument memory	✓	✓	✓	✓	✓	✓	✓	✓	✓	✓
Scaling	✓	✓	✓	✓	✓	✓	✓			
Filtering	✓	✓	✓	✓	✓	✓			✓	✓
Thermocouple type										✓
Cold Junction Compensation										✓
Rising/Falling events								✓		

CATALOG NO.	DESCRIPTION
2156.01	Simple Logger Model SL01 (Voltage, 5 Vac)
2156.10	Simple Logger Model SL10 (Voltage, 100mVDC)
2156.11	Simple Logger Model SL11 (Voltage, 1 VDC)
2156.12	Simple Logger Model SL12 (Voltage, 10 VDC)
2156.13	Simple Logger Model SL13 (Voltage, 50 VDC)

# DATA LOGGERS

## SIMPLE LOGGER® DATA LOGGERS

### MODELS SL20 TO SL50

Models available for logging  
DC Current, Temperature,  
Pulse and Events



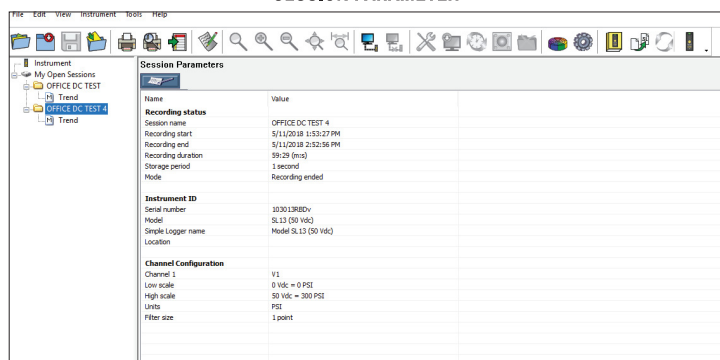
Model SL20      Model SL30      Model SL31      Model SL40      Model SL50



## SPECIFICATIONS

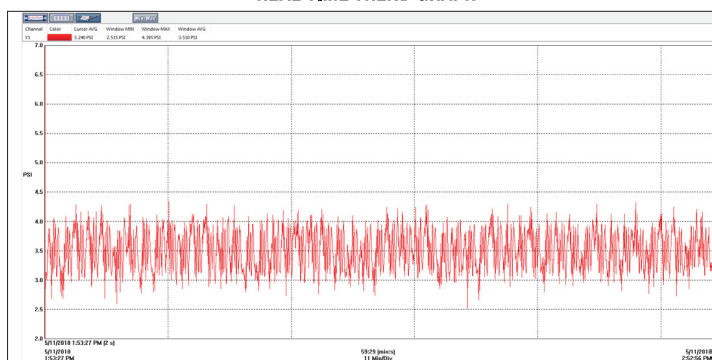
MODELS	SL20	SL30	SL31	SL40	SL50							
					Thermocouple Type:							
					J	K	N	T	E	R	S	
	<b>CURRENT</b>	<b>PULSE</b>	<b>EVENT</b>		<b>TEMPERATURE</b>							
<b>Range</b>	±20 mA	Contact closure, 0 to 5 Vdc	Contact closure, 0 to 5 Vdc	-94 to 1022°F (-70C to +550C)	-346 to 2192°F (-210 to 1200°C)	-328 to 2502°F (-200 to 1372°C)	-328 to 2372°F (-200 to 1300°C)	-328 to 752°F (-200 to 400°C)	-328 to 1832°F (-200 to 1000°C)	32 to 3200°F (0 to 1760°C)		
<b>Resolution</b>	0,02 mA	n/a	n/a	0,1°C	0,1°C							
<b>Accuracy</b>	±(0,5% of reading + 0.1 mA)*	n/a	n/a	±(1% of reading + 1,8°F [1°C])*	Below -148°F (-100°C): ±(0,4% of reading + 9°F [5°C])*					32 to 212°F (0° to +100°C): ±(0,3% of reading + 18°F [10°C])*		
					-148 to 212°F (-100° to 100°C): ±(0,3% of reading + 7,2°F [4°C])*					Above 212°F (100°C): ±(0,2% of reading + 14°F [8°C])*		
					Above 212°F (100°C): ±(0,2% of reading + 5,4°F [3°C])*							
<b>Maximum Input Voltage</b>	3 Vdc	10 Vdc	n/a	1 V								
<b>Input Impedance</b>	49 Ω	800 KΩ	n/a	800 KΩ								
<b>Power Source</b>	Internal: Two 1.5 V AA non-rechargeable batteries External: USB 2.0 (computer or other power source, when powered by the USB the battery is automatically disconnected)											
<b>Power Consumption</b>	Internal power: 1 mA (average) External power: 100 mW											

### SESSION PARAMETER



Shows the current configuration of the logger.

### REAL-TIME TREND GRAPH



Typical real-time trend graph.

CATALOG NO.	DESCRIPTION
2156.20	Simple Logger Model SL20 (Current, 4 to 20 mADC)
2156.30	Simple Logger Model SL30 (Pulse)
2156.31	Simple Logger Model SL31 (Event)
2156.40	Simple Logger Model SL40 (Temperature, RTD/PT1000)
2156.50	Simple Logger Model SL50 (Temperature, Thermocouple)

