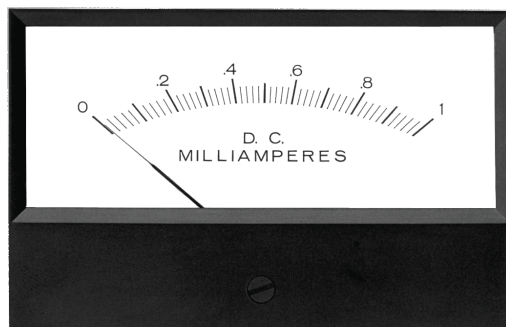




2100 Series

Low Profile Phenolic Meters



3-1/2" 4-1/2"
 2135 ■ D.C. Moving Coil 2145 ■ D.C. Moving Coil
 2136 ■ A.C. Repulsion 2146 ■ A.C. Repulsion

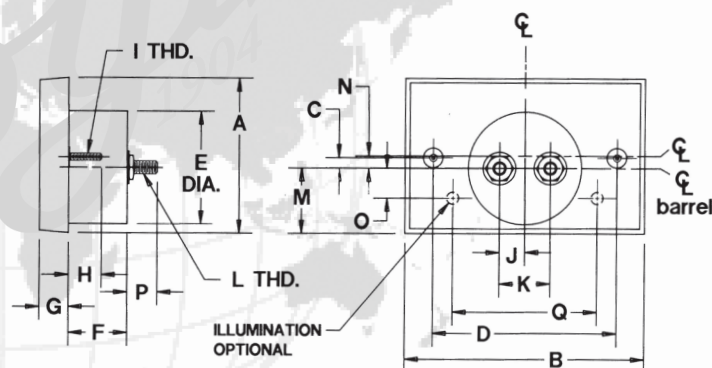
FEATURES

■ The low profile series of non-static phenolic and glass meters is especially suited for applications where plastic meters are unsuitable or where low, rectangular styling is a must.

■ This series features a clean, uncluttered scale for excellent readability, smooth satin finish front and fast, two stud mounting. While shielded Accuring movement is standard in most ranges, these meters can be ordered with any Hoyt movement.

■ Matching AC versions are available as are rectifier type and VU models.

DIMENSIONS



MODELS	A	B	C	D	E	F	G	H	I	J	K	L	M	N	O	P	Q
2135/36	2.73	4.01	0.00	2.94	2.16	1.08	0.55	0.66	6-32	0.48	0.97	10-32	1.25	0.12	0.57	0.50	2.46
2145/46	2.96	4.56	0.20	3.50	2.16	1.08	0.55	0.66	6-32	0.48	0.97	10-32	1.25	0.24	0.57	0.50	2.75

HOW TO ORDER

To order Hoyt 2100 series panel meters, choose correct model and size, add range and scale.

Example: 3-1/2" DC shunt rated 0-100 Ammeter
P/N 2135-50MVDC-100ADC