

# Track-It™

## DC Voltage and Current Data Loggers

### Description

The Track-It™ DC Voltage and Current Data Loggers are two channel battery powered stand alone compact data loggers that record up to 64,000 samples each of DC Voltage or Current data. Units are available in 4 DC voltage ranges or for DC current. The unit is easily set up using the included Track-It™ Software. Simply plug the logger into an open USB port on your PC and the software automatically identifies the logger. Configure the unit to start and stop recording at a predetermined time and date or only when an alarm condition is sensed. The sample storage rate can be set from 1 sample every 2 seconds up to 1 sample every 24 hours. The on board data storage is non-volatile so data will not be lost in the event of a depleted battery. The Track-It™ DC Voltage and Current Loggers



can also be used to record ambient temperature if one or neither input is being used. Information displayed on the LCD is also user programmable and can be sequenced by pressing the logger button. A multicolored LED indicator notifies the user of alarms, or general activity.

### Features

- Push button or program to start recording
- Up to 64,000 samples per record
- 500mVDC, 1VDC, 5VDC, 10VDC, or 20mA
- +/- .5% accuracy
- Alarm set points
- Small compact size
- N.I.S.T. calibration available
- Integral USB interface (no custom cable!)
- Interactive software (included!)
- One year battery life (battery included!)
- Optional three year battery life
- High accuracy and repeatability
- Accurate internal clock (1 minute/year)
- Multiple user programmable displays

### Typical Uses

- Industrial process
- Troubleshooting
- Productivity monitoring
- Remote indication

### Ordering Information

Model	Description	Part Number
Analog 500mV Track-It	Logger with display, 500 mV module and standard battery	5396-0511
Analog 1V Track-It	Logger with display, 1 Volt module and standard battery	5396-0512
Analog 5V Track-It	Logger with display, 5 Volt module and standard battery	5396-0513
Analog 10V Track-It	Logger with display, 10 Volt module and standard battery	5396-0514
Analog 20mA Track-It	Logger with display, 20 mA module and standard battery	5396-0515
Analog 500mV Track-It LB	Logger with display, 500 mV module and long life battery	5396-0521
Analog 1V Track-It LB	Logger with display, 1 Volt module and long life battery	5396-0522
Analog 5V Track-It LB	Logger with display, 5 Volt module and long life battery	5396-0523
Analog 10V Track-It LB	Logger with display, 10 Volt module and long life battery	5396-0524
Analog 20mA Track-It LB	Logger with display, 20 mA module and long life battery	5396-0525
NIST Analog	Logger with NIST calibration certificate	5396-05-xxCAL

# Track-It™ DC Voltage and Current Data Loggers



## Specifications

### General

<b>Record:</b>	<b>Sample Rates:</b> User configured 1 every 2 seconds up to 1 every 24 hours <b>No. of Samples:</b> 32,000 or 64,000 (depends on setup)
<b>Record Trigger:</b>	Two independent triggers. Multiple trigger modes: Instantaneous, button control, on alarm, time and date (start and stop), day of week
<b>Record Mode:</b>	Fill to end of memory, cyclic, number of samples, time duration
<b>Display:</b>	4 digit LCD (Non display versions available with LED only) User programmable: Indication of data value, eng units, alarms, record mode, battery condition, time/date, memory
<b>LED:</b>	User programmable: Indication of alarms, recording, triggered
<b>Button:</b>	User programmable: View display, record on/off, reset alarms
<b>Alarms:</b>	2 user programmable alarms. High or Low
<b>Communication:</b>	Direct USB connection
<b>Software:</b>	Track-It™ Software—Program device, view recorded data, export to Excel™. Simple and advanced modes
<b>Battery:</b>	<b>Coin Cell Option:</b> Battery: Lithium CR2032 Life: 1 year @ 1 minute sample rate <b>Hi Energy Option:</b> Battery: EF651625 Life: 3 years @ 1 minute sample rate
<b>Dimensions:</b>	4.06" (10.32cm)L x 0.66" (1.67cm)H x 1.00" (2.54cm)W

### Measurement

<b>Temperature Range:</b>	-20 to +85°C / -4 to 185°F w/EF65162 battery -20 to +70°C / -4 to 158°F w/CR2032 battery
---------------------------	---

<b>Accuracy:</b>	±0.5°C 0 to 50°C / 32 to 122°F ±2°C -20 to 85°C / -4 to 185 F
------------------	--

<b>Resolution:</b>	0.06°C / 0.11°F
--------------------	-----------------

<b>Clock Accuracy:</b>	±1 minute/year
------------------------	----------------

### Available Analog Modules (for DC V/I)

<b>Range:</b>	0 to 500mV (no preconditioning)
---------------	---------------------------------

<b>Accuracy:</b>	±0.5% of full scale
------------------	---------------------

<b>Resolution:</b>	±0.1mV
--------------------	--------

<b>Input Modules:</b>	500mV, 1V, 5V, 10V, 20mA
-----------------------	--------------------------



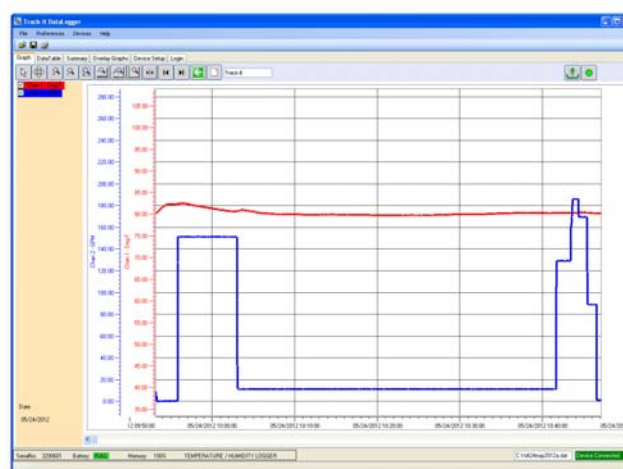
## Track-It™ Software

Track-It™ Software is a powerful Windows based software package that is included with every Track-It™ Data Logger. It allows for easy setup, retrieval, interpretation and export of the recorded data. Simply connect your Track-It™ data logger to an open USB port and begin communicating immediately.

Point and click to select your sample interval, alarm set points, engineering units, recording triggers and LCD Displays.

Monitor and record any voltage or current device. Scale directly to your engineering units such as flow, pressure, PH, vibration, temperature, gases, control outputs.

View a numerical data table or graphical representation of data readings relative to time. Use the graph tools such as zoom, cursor, min and max to examine and analyze the record. Export stored data into an Excel spreadsheet.



Track-It™ Software

## Track-It™ Transport App



Track-It™ Transport is a free Android Application that allows you to use your Android device to start and stop recording and transfer data using a USB On-the-Go cable. Available on Google Play:

<https://play.google.com/store/apps/details?id=com.trackit.transporter>