

POWER QUALITY ANALYZERS, METERS & LOGGERS

Single-Phase Power Quality Analyzer

Special
product
features
▼



PowerPad® Jr. Model 8230

Measure and carry out diagnostic work and power quality work on single- or three-phase balanced load networks

► SPECIFICATIONS

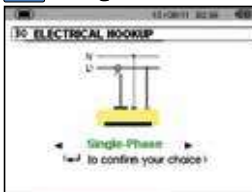
MODEL	8230
ELECTRICAL	
Voltage (TRMS)	Phase-to-Phase: 660V; Phase-to-Neutral: 600V
Current (TRMS)	MN Clamp: 5mA to 6A/120A or 2 to 240A MR Clamp: 10 to 1000Aac, 10 to 1400Aac SR Clamp: 3 to 1200A MiniFlex®: 10 to 1000A AmpFlex®: 10 to 6500A ⁽¹⁾
Frequency (Hz)	40 to 70Hz
Other Measurements	kW, kVAR, PF, DPF, kWh, kVARh, kVAh, K-Factor, Flicker, Harmonic Phase Shift, Phase Rotation
Harmonics	THD-R, THD-F, V, A, VA, 1 st to 50 th , Direction, Sequence
Sampling Frequency	256 samples/cycle
Data Storage	1.5MB partitioned for waveforms, alarms and trend recording
Power Source	NiMH rechargeable battery pack (included) AC Supply: 120/230Vac (50/60Hz)
Battery Life	≥8 hrs with display on ≥40 hrs with display off (recording mode)
MECHANICAL	
Communication Port	Optically isolated USB
Display	¼ VGA (320 x 240) color LCD digital & graphical display with adjustable brightness & contrast
Dimensions	8.3 x 4.3 x 2.4" (211 x 108 x 60mm)
Weight	1.9 lbs (0.88kg)
Safety Rating	EN 61010, 600V CAT III, IP54, Pollution Degree 2

⁽¹⁾Crest factor at 6500 = 1

► FEATURES

- Measures up to 660Vrms or Vbc
- Measures up to 6500Aac or 1400Aac (probe dependent)
- Displays Min, Max and Average Volts and Amps, Crest Factor, Peak value and K-Factor
- Calculates and displays Watts, VARs and VA, Power Factor and Displacement Power Factor for single-phase and balanced three-phase
- Measures and records power systems (kW, VA, kVAR)
- Energy metering (kAh, VARh, kWh)
- Displays total harmonic distortion (THD-F and THD-R) for voltage and current
- Displays individual harmonic values and % for Volts and Amps through the 50th harmonic
- Captures, displays and stores inrush current waveforms and statistics
- Stores up to eight screen captures
- Stores up to 1MB of trend recorded data
- Configurable from DataView® software or front panel
- Download stored data to DataView® software via optical USB port (included)
- Captures up to 4096 alarm events from up to 10 different thresholds
- Displays and records up to 17 different power quality parameters
- Includes FREE DataView® software for configuring data storage, real-time waveform display, analysis and report generation
- The Max and Min RMS measurements are calculated every half-period

Configuration



Recording Setup



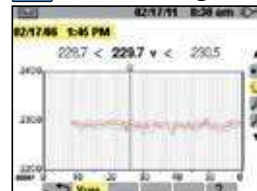
Inrush Mode



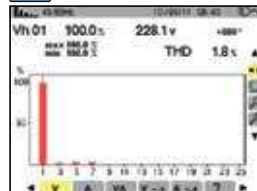
Waveform Mode



Trend Recording



Harmonics Mode



CATALOG NO.

DESCRIPTION

2130.81	PowerPad® Jr. Model 8230 (no probes)
2130.82	PowerPad® Jr. Model 8230 w/MN93-BK
2130.83	PowerPad® Jr. Model 8230 w/SR193-BK
2130.84	PowerPad® Jr. Model 8230 w/24" 193-24-BK (AmpFlex®)
2130.87	PowerPad® Jr. Model 8230 w/MN193-BK
2130.88	PowerPad® Jr. Model 8230 w/MA193-10-BK



Technical Assistance (800) 343-1391

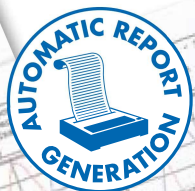
www.aemc.com

DataView®

Data Analysis and Reporting Software for Power Quality Meters



Configure all functions of the Power Quality Meters

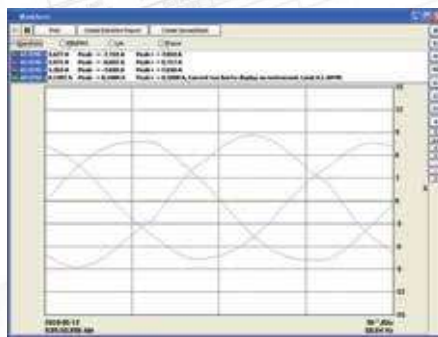


- Display and analyze real-time data on your PC
- Configure functions and parameters from your PC
- Customize views, templates and reports to your exact needs
- Create and store a complete library of configurations that can be uploaded as needed
- Zoom in and out and pan through sections of the graph to analyze the data
- Download, display and analyze recorded data
- Display waveforms, trend graphs, harmonic spectrums, text summaries, transients, event logs and stored alarms
- Print reports using standard or custom templates you design
- Free updates are available on our website www.aemc.com

Typical DataView® Functional, Digital & Graphical Displays



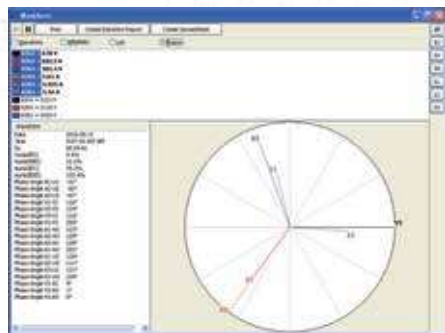
Clear and easy setup of all functions from one tabbed dialog box.



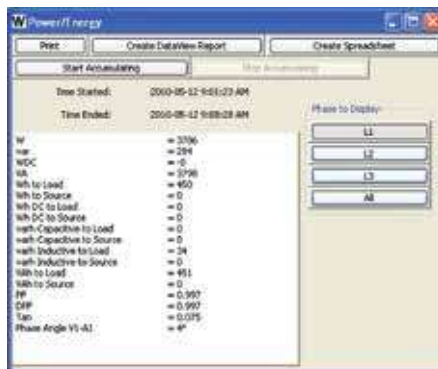
Display real-time waveforms by phase, parameter or total.



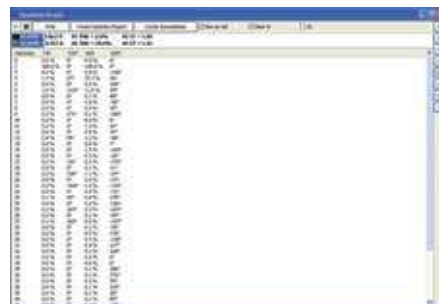
Display all harmonics from 1st to 50th in bargraph form for voltage, current and power.



Display real-time Phasor diagrams. Includes unbalance for both voltage and current.



Display power and energy parameters – both instantaneous and total.



Display harmonics in a text table from harmonic 0 (DC) through the 50th.